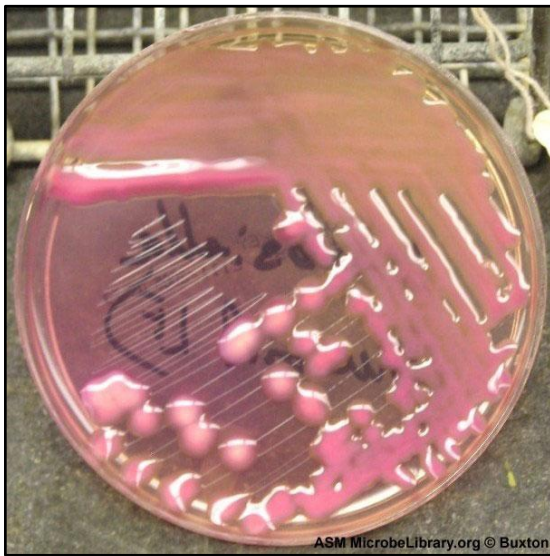


Gram stain (Gram-negative rods)



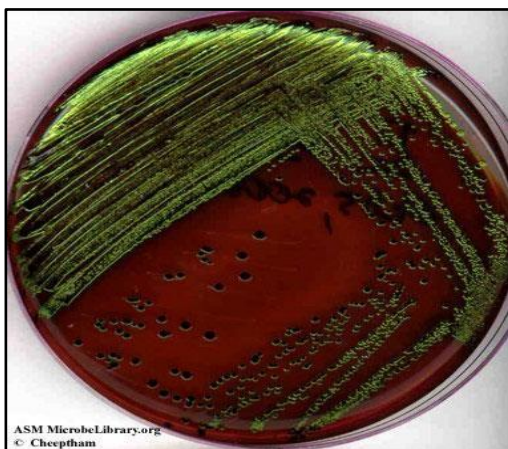
*E. coli* on MacConkey agar (Lactose fermenter)



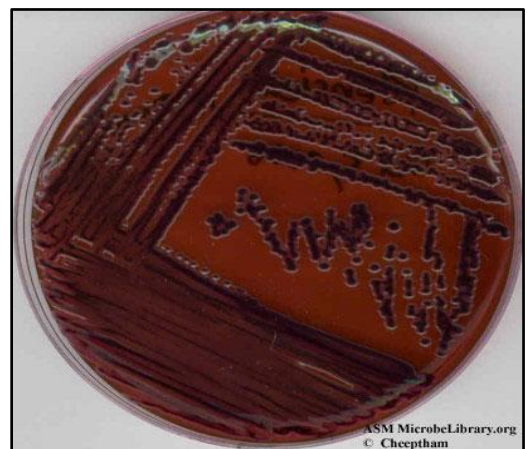
*K. pneumoniae* on MacConkey agar (Lactose fermenter)



*Serratia marcescens* on MacConkey agar (Lactose fermenter) with red pigment (prodigiosin)



*E. coli* on Eosin methylene blue agar (EMB) (Metallic green sheen)

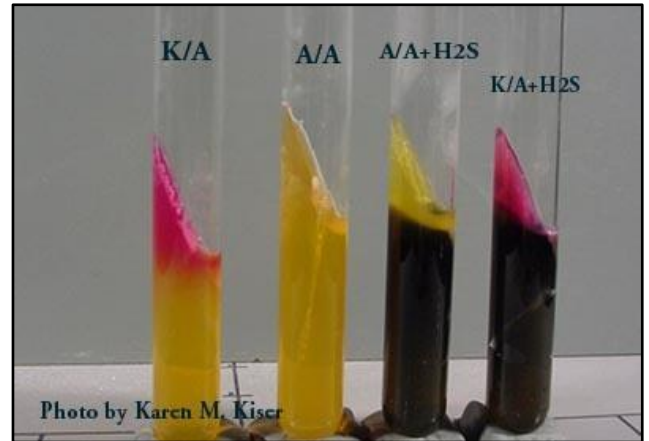


*K. pneumoniae* on EMB agar (No metallic green sheen)

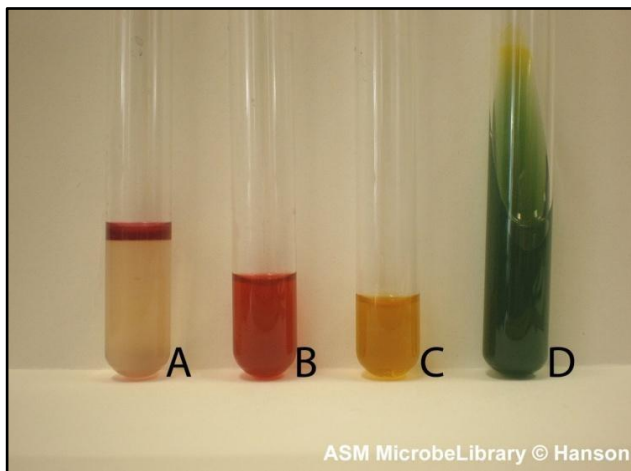


A/A +- K/A-- K/A-+ K/K--

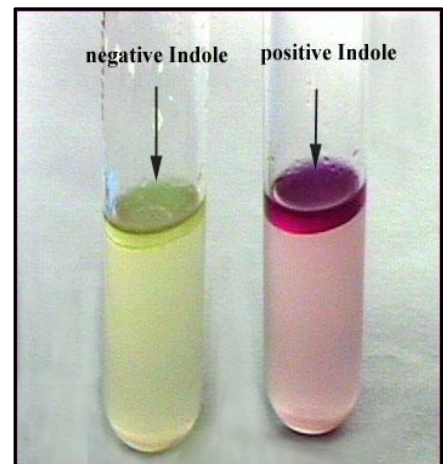
Triple Sugar Iron Agar (TSI)



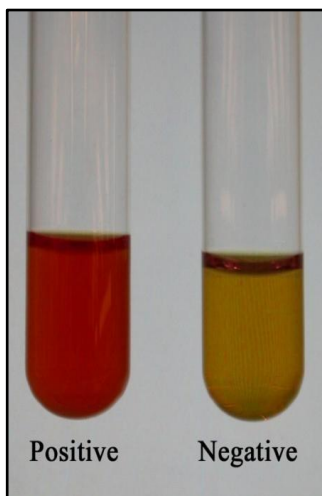
Triple Sugar Iron Agar (TSI)



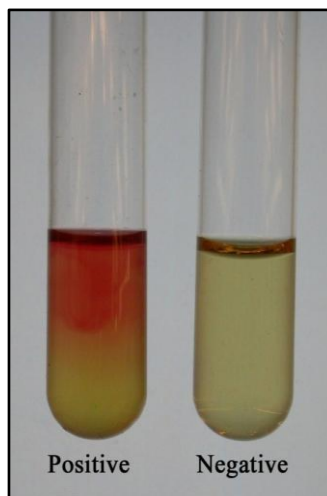
IMViC test



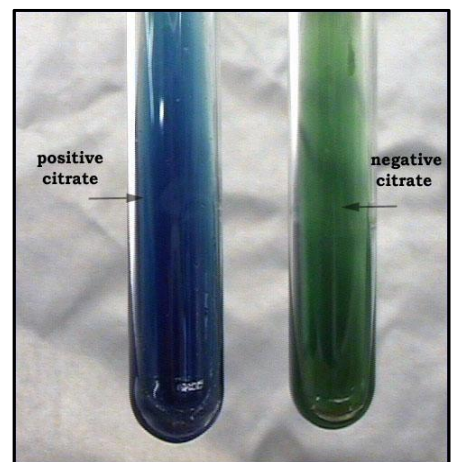
Indole test



Methyl red test



Voges-Proskauer test



Citrate Utilization Tes

