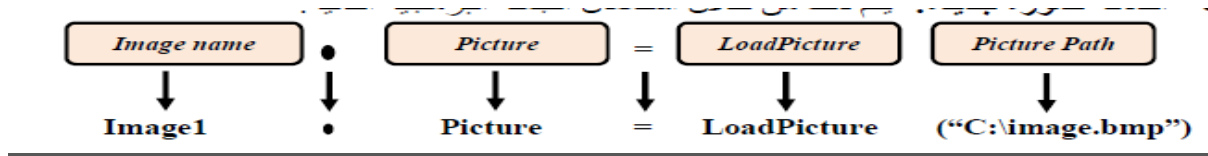


Image Tool



DriveListBox,DirListBox and FileListBox in Visual Basic 6.0

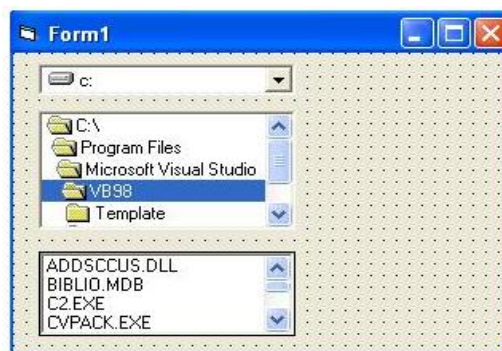
Three of the controls on the Tool Box let you access the computer’s file system. They are DriveListBox, DirListBox and FileListBox controls .

The Drive ListBox is used to display a list of drives available in your computer. When you place this control into the form and run the program, you will be able to select different drive from your computer.

The DirListBox is Directory ListBox is used to display the list of directories or folder in a selected drive. When you place this control into the form and run the program, you will be able to select different directories from a selected drive in your computer.

The FileListBox is used to display the list of files in a selected directory or folder. When you place this control into the form and run the program, you will be able to see a list of files in a selected directory.

First Step: Create new project in Visual Basic 6. Then Input a Controls in Form1.
DriveListBox, DirListBox, and FileListBox.



Second Step: Double click on Drive control

Third Step: Code window is open. Write code here.

```

Private Sub Drive1_Change()
    Dir1.Path = Drive1.Drive
End Sub

Private Sub DirListBox_Change()
    FileListBox.Path = DirListBox.Path
End Sub

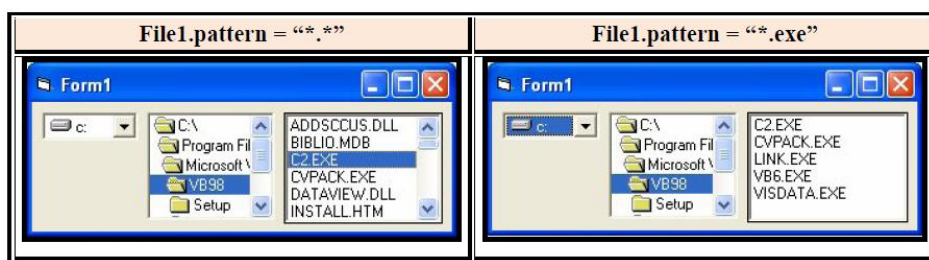
Private Sub FileListBox_Click()
    filename.Caption = FileListBox.filename
End Sub
    
```

The following table shows the default properties of the basic tools:

Object	Default Property
Drivelistbox	Drive
Drive List Box	Path
File List Box	Pattern
	File Name
	Path

Pattern Property :This Property identifies the files displayed in the list type. The default Value for this Property is the *.* Which does offer all types of files. If we put in these Property for example *.bmp files will be displayed with a subsequent feature bmp.

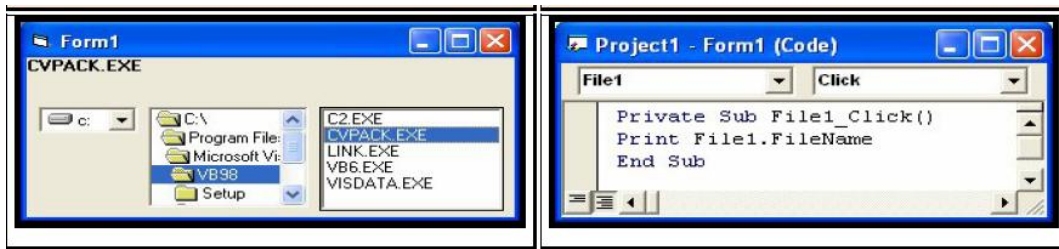
Determine the path where the files



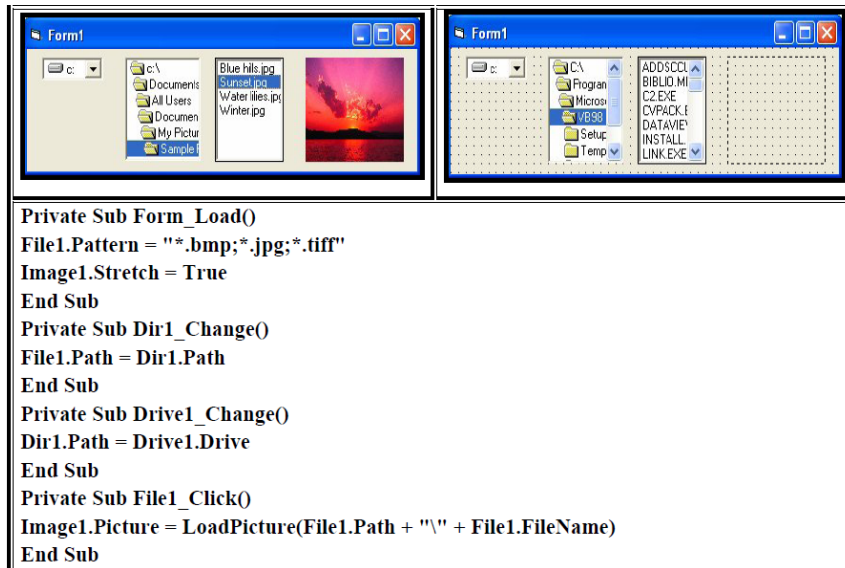
Path Property:Determine the path where the files



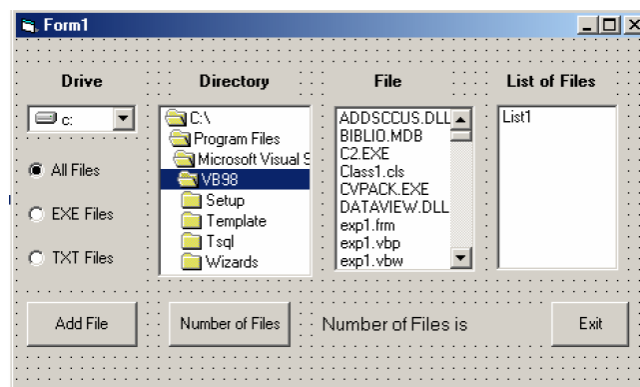
File name Property: This feature gives the file name that was selected from the list.



Example 1: Design a form to display of the pictures in the computer device



Example2 Design a form to select the file according to the specific type of option buttons and then add it to the ListBox after clicking on a command button. And view the total numbers of files added to the list.



```
Private Sub command1_Click()
```

```
Label1.Caption = List1.ListCount
```

```
End Sub
```

```
Private Sub Dir1_Change()
```

```
File1.Path = Dir1.Path
```

```
End Sub
```

```
Private Sub Drive1_Change()
```

```
Dir1.Path = Drive1.Drive
```

```
End Sub
```

```
Private Sub option1_Click()
```

```
File1.Pattern = "*.*)"
```

```
End Sub
```

```
Private Sub option2_Click()
```

```
File1.Pattern = "*.EXE"
```

```
End Sub
```

```
Private Sub option3_Click()
```

```
File1.Pattern = "*.TXT"
```

```
End Sub
```

```
Private Sub command2_Click()
```

```
List1.AddItem File1.FileName
```

```
Label2.Caption = "Number of Files is"
```

```
End Sub
```